



MSP G
M
B
H

Märkische Stanz-Partner



**Schnellwechsel-Schneidelemente,
schwere Ausführung**

**Ball lock cutting elements,
heavy duty**

	Schnellwechsel-Schneidelemente	Ball lock cutting elements	Best.-Nr. Order no.	Seite Page
	<u>Schnellwechsel-Schneidstempel, schwere Ausführung</u>	<u>Ball lock punches, heavy duty</u>	SE 300	SSE.4
	<u>Schnellwechsel-Schneidstempel, schwere Ausführung, mit federndem Auswerferstift</u>	<u>Ball lock punches, heavy duty, with spring ejector</u>	SE 320	SSE.5
	<u>Schnellwechsel-Schneidstempel, schwere Ausführung, abgesetzter Schaft</u>	<u>Ball lock punches, heavy duty, shouldered shank</u>	SE 301	SSE.6
	<u>Schnellwechsel-Schneidstempel, schwere Ausführung, abgesetzter Schaft, mit federndem Auswerferstift</u>	<u>Ball lock punches, heavy duty, shouldered shank, with spring ejector</u>	SE 321	SSE.7
	<u>Schnellwechsel-Schneidstempel, schwere Ausführung, abgesetzter Schaft Typen O, S, H, L</u>	<u>Ball lock punches, heavy duty, shouldered shank Typen O, S, H, L</u>	SE 302 .	SSE.8
	<u>Schnellwechsel-Schneidstempel, schwere Ausführung, abgesetzter Schaft Typen O, S, H, L, mit fed. Auswerferst.</u>	<u>Ball lock punches, heavy duty, shouldered shank, Typen O, S, H, L, with spring ejector</u>	SE 322 .	SSE.9
	<u>Schnellwechsel-Schneidstempel, schwere Ausführung, Schneide > Schaft</u>	<u>Ball lock punches, heavy duty, inverted</u>	SE 303	SSE.10
	<u>Schnellwechsel-Schneidstempel, schwere Ausführung, Schneide > Schaft, mit federndem Auswerferstift</u>	<u>Ball lock punches, heavy duty, inverted, with spring ejector</u>	SE 323	SSE.11
	<u>Schnellwechsel-Schneidstempel, schwere Ausführung, Schneide > Schaft, Typen O, S, H, L</u>	<u>Ball lock punches, heavy duty, inverted, Typen O, S, H, L</u>	SE 304 .	SSE.12
	<u>Schnellwechsel-Schneidstempel, schw. Ausführung, Schneide > Schaft, Typen O, S, H, L, mit fed. Auswerferst.</u>	<u>Ball lock punches, heavy duty, inverted, Typen O, S, H, L, with spring ejector</u>	SE 324 .	SSE.13
	<u>Schnellwechsel-Schneidbuchsen, leichte Ausführung, rund</u>	<u>Ball lock die buttons, light duty, round</u>	SE 340	SSE.14
	<u>Schnellwechsel-Schneidbuchsen, leichte Ausführung, Profile, Typen O, S, H, L</u>	<u>Ball lock die buttons, light duty, profiles, Typen O, S, H, L</u>	SE 341 .	SSE.15
	<u>Stempelhalteplatten für Schnellwechsel-Schneidstempel</u>	<u>Retainer plates for ball lock punches</u>	SE 390	SSE.16
	<u>Entrigelungswerkzeuge für Stempelhalteplatten, abgewinkelte Ausführung</u>	<u>Release tools for ball lock punch retainers, angular</u>	SE 360	SSE.17
	<u>Entrigelungswerkzeuge für Stempelhalteplatten, gerade Ausführung</u>	<u>Release tools for ball lock punch retainers, straight</u>	SE 361	SSE.17
	<u>Entrigelungswerkzeuge für Stempelhalteplatten, Gewindeausführung</u>	<u>Release tools for ball lock punch retainers, threaded</u>	SE 362	SSE.17
	<u>Formbeispiele für Sonderschneidelemente</u>	<u>Shape examples for special cutting elements</u>		SSE.18
	<u>Bestellformular Sonderanfertigungen</u>	<u>Order form special shapes</u>		SSE.19

SE 300

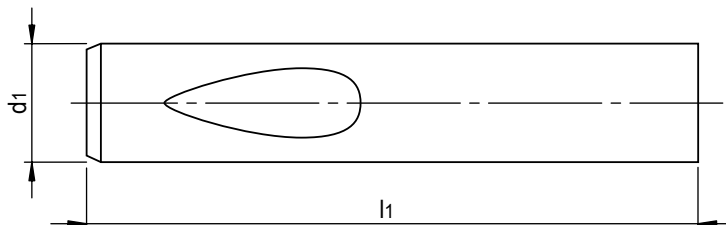
Schwere Ausführung

Mat.: HSS
Härte: 60 - 63 HRC

Heavy duty

Mat.: HSS (e.g. M2)
Hardness: 60 - 63 HRC

SE 300 / 13 x 80



d1 g ⁵	l1 +0,3						
	63	71	80	90	100	110	125
10	●	●	●	●	●	●	●
13	●	●	●	●	●	●	●
16	●	●	●	●	●	●	●
20	●	●	●	●	●	●	●
25		●	●	●	●	●	●
32		●	●	●	●	●	●
40			●	●	●	●	●

SE 320

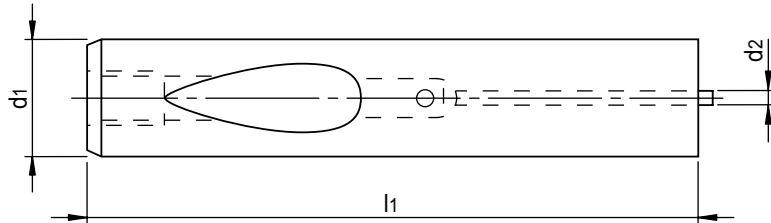
**Schwere Ausführung
mit federndem Auswerferstift**

Mat.: HSS
Härte: 60 - 63 HRC

**Heavy duty
with spring ejector**

Mat.: HSS (e.g. M2)
Hardness: 60 - 63 HRC

 **SE 320 / 13 x 80**



d1 g5	d2	l1 +0,3						
		63	71	80	90	100	110	125
10	1,5	●	●	●	●	●		
13	1,5	●	●	●	●	●	●	●
16	1,5	●	●	●	●	●	●	●
20	2,4	●	●	●	●	●	●	●
25	2,4		●	●	●	●	●	●
32	2,4		●	●	●	●	●	●
40	2,4			●	●	●	●	●

SE 301

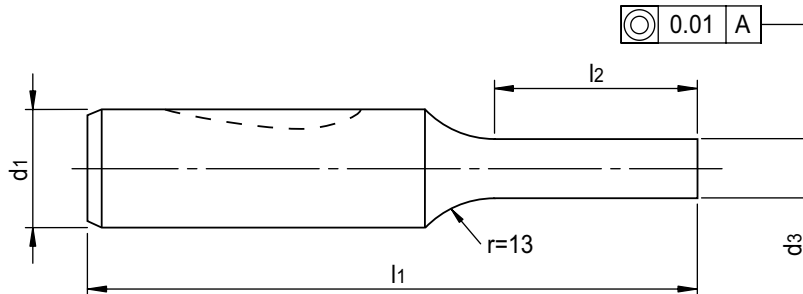
Schwere Ausführung

Mat.: HSS
Härte: 60 - 63 HRC

Heavy duty

Mat.: HSS (e.g. M2)
Hardness: 60 - 63 HRC

SE 301 /
20 x 19 x 80 / d3



d1 g5	d3 min. +0,01	l2 +1				l1 +0,3						
		10	13	19	25	63	71	80	90	100	110	125
10	2,1	●	●	●		●	●	●	●	●	●	●
13	5		●	●		●	●	●	●	●	●	●
16	8		●	●	●	●	●	●	●	●	●	●
20	12		●	●	●	●	●	●	●	●	●	●
25	16		●	●	●		●	●	●	●	●	●
32	24		●	●	●		●	●	●	●	●	●
40	30			●	●			●	●	●	●	●

SE 321

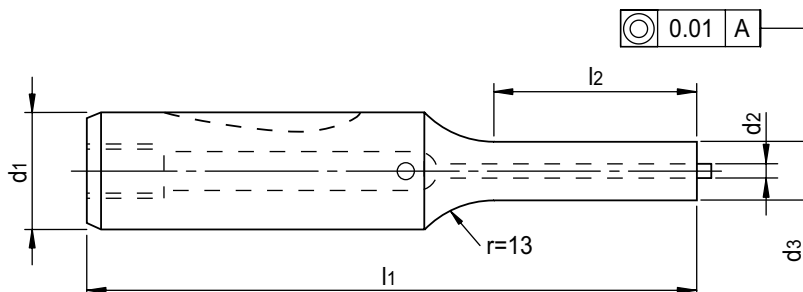
**Schwere Ausführung
mit federndem Auswerferstift**

Mat.: HSS
Härte: 60 - 63 HRC

**Heavy duty
with spring ejector**

Mat.: HSS (e.g. M2)
Hardness: 60 - 63 HRC

**SE 321 /
20 x 13 x 80 / d3**



d1 g5	d2	d3 min. +0,01	l2 +1				l1 +0,3							
			10	13	19	25	63	71	80	90	100	110	125	
10	1,5	2,1	●	●	●		●	●	●	●	●	●		
13	1,5	5		●	●		●	●	●	●	●	●	●	●
16	1,5	8		●	●	●	●	●	●	●	●	●	●	●
20	2,4	12		●	●	●	●	●	●	●	●	●	●	●
25	2,4	16		●	●	●		●	●	●	●	●	●	●
32	2,4	24		●	●	●		●	●	●	●	●	●	●
40	2,4	30			●	●			●	●	●	●	●	●

SE 302 .

Schwere Ausführung

Mat.: HSS
Härte: 60 - 63 HRC

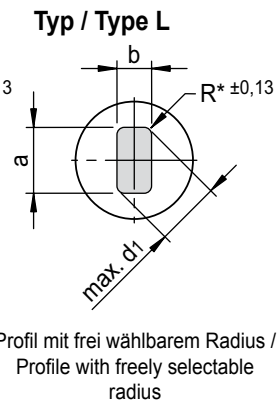
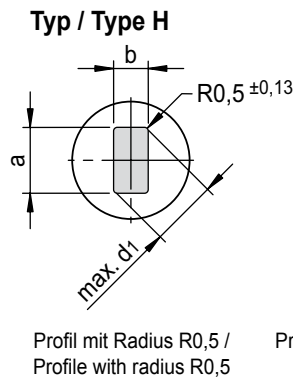
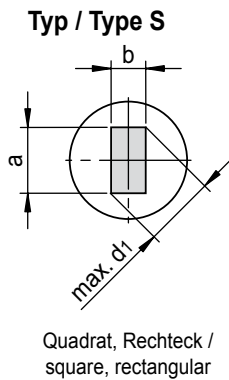
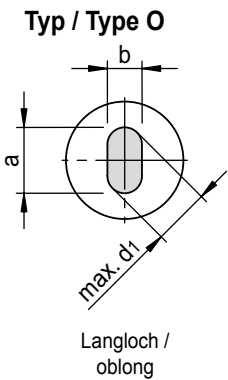
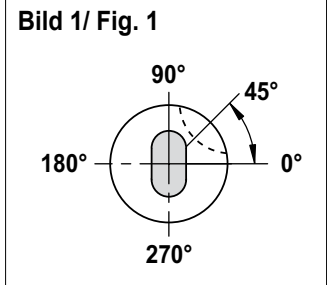
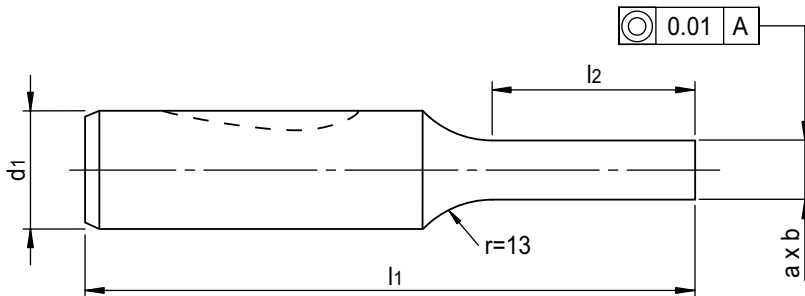
Bei der Bestellung bitte die Position der Kugellage angeben (Bild 1).

Heavy duty

Mat.: HSS (e.g. M2)
Hardness: 60 - 63 HRC

When ordering, please specify the ball position (Fig. 1).

SE 302 O / 20 x 19 x 80 / a x b / 45°



* Bei Typ L ist der Radius R frei wählbar. Bitte bei der Bestellung den Radius angeben.

* With type L the radius R is freely selectable. Please specify the radius when ordering.

d1 g5	a min. ±0,01	b min. ±0,01	l2 +1				l1 +0,3						
			10	13	19	25	63	71	80	90	100	110	125
10	2,1	2,1	●	●	●		●	●	●	●	●	●	●
13	5	4,5		●	●		●	●	●	●	●	●	●
16	8	6		●	●	●	●	●	●	●	●	●	●
20	12	8		●	●	●	●	●	●	●	●	●	●
25	16	10		●	●	●		●	●	●	●	●	●
32	24	12,5		●	●	●		●	●	●	●	●	●
40	30	14			●	●			●	●	●	●	●

SE 322 .

Schwere Ausführung mit federndem Auswerferstift

Heavy duty with spring ejector

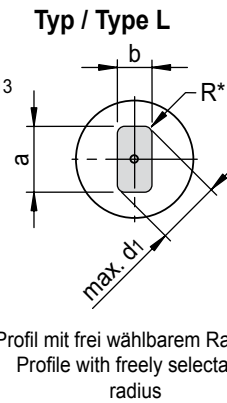
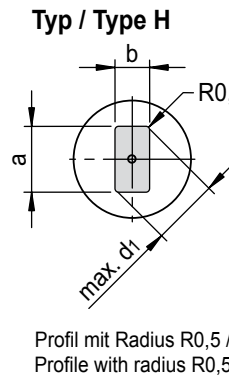
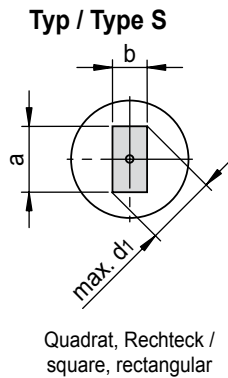
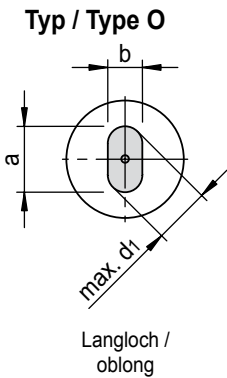
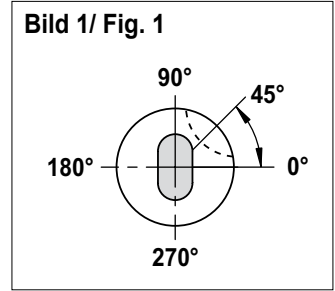
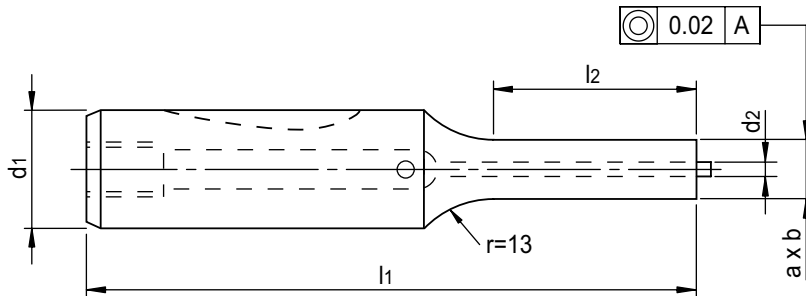
SE 322 O / 20 x 19 x 80 / a x b / 45°

Mat.: HSS
Härte: 60 - 63 HRC

Mat.: HSS (e.g. M2)
Hardness: 60 - 63 HRC

Bei der Bestellung bitte die Position der Kugellage angeben (Bild 1).

When ordering, please specify the ball position (Fig. 1).



* Bei Typ L ist der Radius R frei wählbar. Bitte bei der Bestellung den Radius angeben.

* With type L the radius R is freely selectable. Please specify the radius when ordering.

d1 g5	d2	a min. ±0,01	b min. ±0,01	l2 +1				l1 +0,3						
				10	13	19	25	63	71	80	90	100	110	125
10	1,5	2,1	2,1	●	●	●		●	●	●	●	●	●	
13	1,5	5	4,5		●	●		●	●	●	●	●	●	●
16	1,5	8	6		●	●	●	●	●	●	●	●	●	●
20	2,4	12	8		●	●	●	●	●	●	●	●	●	●
25	2,4	16	10		●	●	●		●	●	●	●	●	●
32	2,4	24	12,5		●	●	●		●	●	●	●	●	●
40	2,4	30	14			●	●			●	●	●	●	●

Ball lock punches, inverted

SCHNEIDELEMENTE / CUTTING ELEMENTS

SE 303

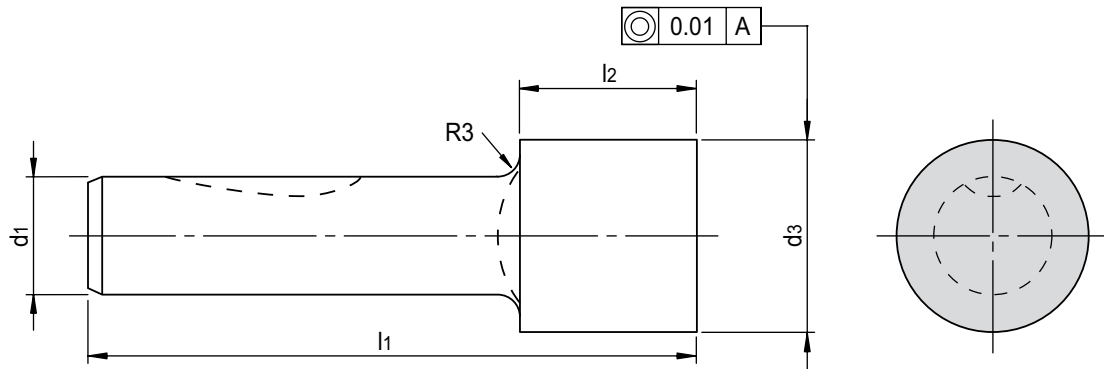
Schwere Ausführung

Heavy duty

Mat.: HSS
Härte: 60 - 63 HRC

Mat.: HSS (e.g. M2)
Hardness: 60 - 63 HRC

 **SE 303 /**
20 x 30 x 71 / d3



d1 g5	d3 min. +0,01	d3 max. +0,01	l2 +1		l1 +0,3			
			19	30	71	80	90	100
13	13,1	32	●	●	●	●	●	●
16	16,1	38	●	●	●	●	●	●
20	20,1	40	●	●	●	●	●	●
25	25,1	44	●	●	●	●	●	●
32	32,1	50	●	●		●	●	●
40	40,1	56	●	●		●	●	●

SE 323

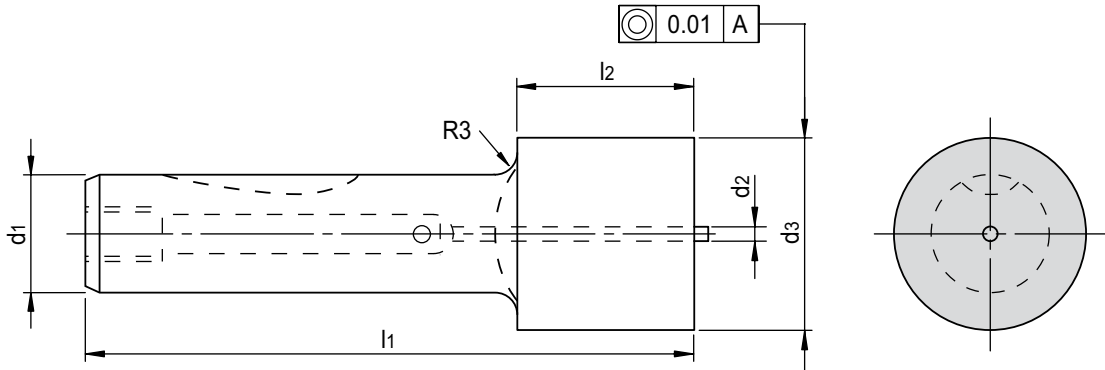
Schwere Ausführung
mit federndem Auswerferstift

Heavy duty
with spring ejector

SE 323 /
20 x 30 x 71 / d3

Mat.: HSS
Härte: 60 - 63 HRC

Mat.: HSS (e.g. M2)
Hardness: 60 - 63 HRC



d1 g5	d2	d3 min. +0,01	d3 max. +0,01	l2 +1		l1 +0,3			
				19	30	71	80	90	100
13	1,5	13,1	32	●	●	●	●	●	●
16	1,5	16,1	38	●	●	●	●	●	●
20	2,4	20,1	40	●	●	●	●	●	●
25	2,4	25,1	44	●	●	●	●	●	●
32	2,4	32,1	50	●	●		●	●	●
40	2,4	40,1	56	●	●		●	●	●

SE 304 .

Schwere Ausführung

Mat.: HSS
Härte: 60 - 63 HRC

Bei der Bestellung bitte die Position der Kugellage angeben (Bild 1).

Heavy duty

Mat.: HSS (e.g. M2)
Hardness: 60 - 63 HRC

When ordering, please specify the ball position (Fig. 1).

SE 304 O / 20 x 30 x 80 / a x b / 45°

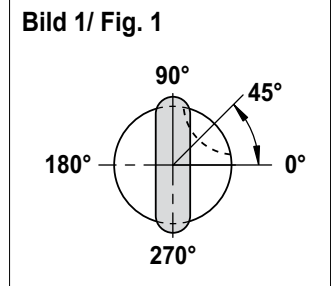
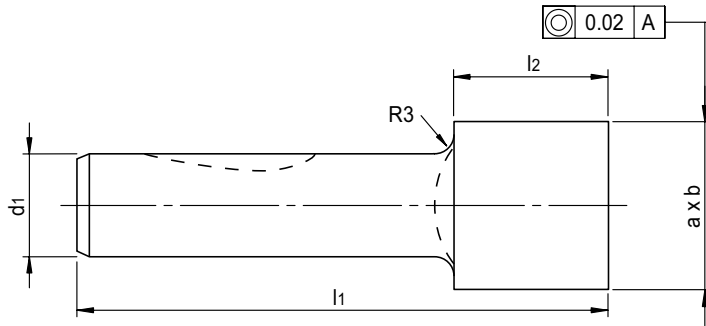
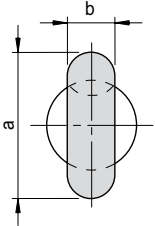


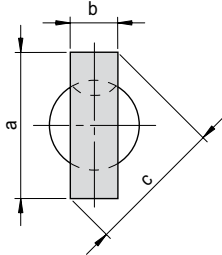
Bild 1/ Fig. 1

Typ / Type O



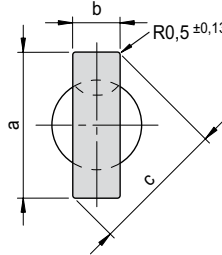
Langloch / oblong

Typ / Type S



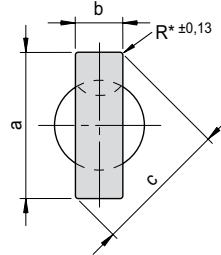
Quadrat, Rechteck / square, rectangular

Typ / Type H



Profil mit Radius R0,5 / Profile with radius R0,5

Typ / Type L



Profil mit frei wählbarem Radius / Profile with freely selectable radius

* Bei Typ L ist der Radius R frei wählbar. Bitte bei der Bestellung den Radius angeben.

* With type L the radius R is freely selectable. Please specify the radius when ordering.

d1 g ⁵	a max. ±0,01	b min. ±0,01	c max.	l2 +1		l1 +0,3			
				19	30	71	80	90	100
13	32	5	32	●	●	●	●	●	●
16	38	6,5	38	●	●	●	●	●	●
20	40	8	40	●	●	●	●	●	●
25	44	11	44	●	●	●	●	●	●
32	50	12,5	50	●	●	●	●	●	●
40	56	14	56	●	●	●	●	●	●

SE 324 .

Schwere Ausführung
mit federndem Auswerferstift

Heavy duty
with spring ejector

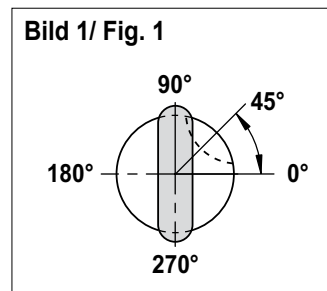
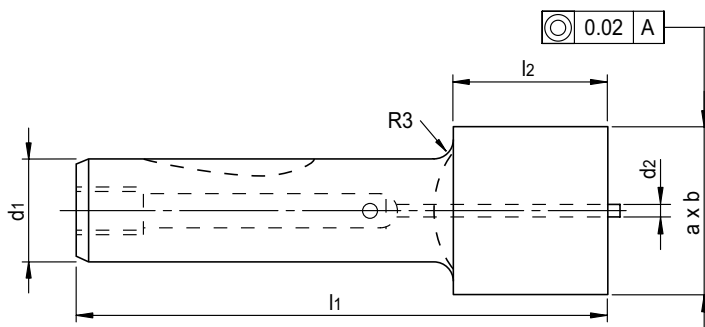
SE 324 O/ 20 x 30 x
80 / a x b / 45°

Mat.: HSS
Härte: 60 - 63 HRC

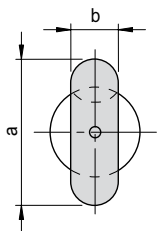
Mat.: HSS (e.g. M2)
Hardness: 60 - 63 HRC

Bei der Bestellung bitte die Position
der Kugellage angeben (Bild 1).

When ordering, please specify the
ball position (Fig. 1).

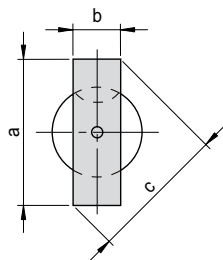


Typ / Type O



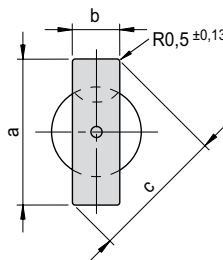
Langloch /
oblong

Typ / Type S



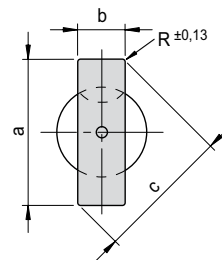
Quadrat, Rechteck /
square, rectangular

Typ / Type H



Profil mit Radius R0,5 /
Profile with radius R0,5

Typ / Type L



Profil mit frei wählbarem Radius /
Profile with freely selectable
radius

* Bei Typ L ist der
Radius R frei wählbar.
Bitte bei der Bestellung
den Radius angeben.

* With type L the radius R
is freely selectable.
Please specify the
radius when ordering.

d1 g5	d2	a max. ±0,01	b min. ±0,01	c max.	l2 +1		l1 +0,3			
					19	30	71	80	90	100
13	1,5	32	5	32	●	●	●	●	●	●
16	1,5	38	6,5	38	●	●	●	●	●	●
20	2,4	40	8	40	●	●	●	●	●	●
25	2,4	44	11	44	●	●	●	●	●	●
32	2,4	50	12,5	50	●	●	●	●	●	●
40	2,4	56	14	56	●	●	●	●	●	●

SE 340

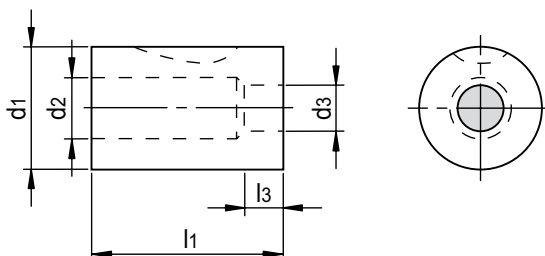
Leichte Ausführung

Light duty

 **SE 340 / 20 / d3**

Mat.: HWS
Härte: 60 - 63 HRC

Mat.: HWS (e.g. A2)
Hardness: 60 - 63 HRC



d1 g5	d3 +0,01 ≥ ≤	d2 max.	l1 +0,3	l3
13	1,5 - 5,0	6	32	4
16	3,2 - 7,0	8	32	5
20	4,0 - 11,0	12	32	5
25	8,0 - 15,0	16	32	6
32	11,0 - 19,0	20	32	6
38	16,5 - 26,0	27	32	8

SE 341 .

Leichte Ausführung

Mat.: HWS
Härte: 60 - 63 HRC

Bei der Bestellung bitte die Position der Kugellage angeben (Bild 1).

Light duty

Mat.: HWS (e.g. A2)
Hardness: 60 - 63 HRC

When ordering, please specify the ball position (Fig. 1).

SE 341 S / 16 / a x b / 45°

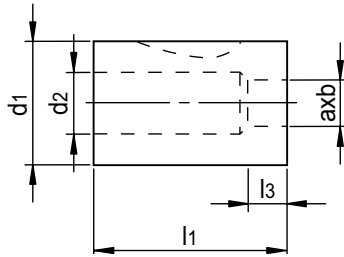
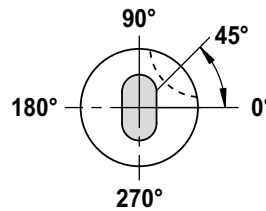
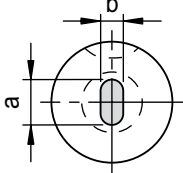


Bild 1/ Fig. 1

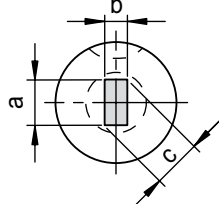


Typ / Type O



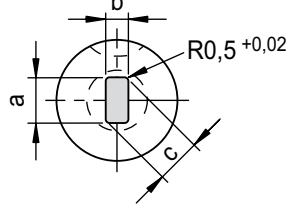
Langloch / oblong

Typ / Type S



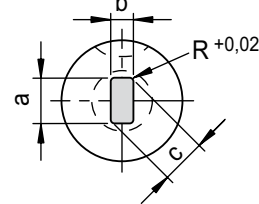
Quadrat, Rechteck / square, rectangular

Typ / Type H



Profil mit Radius R0,5 / Profile with radius R0,5

Typ / Type L



Profil mit frei wählbarem Radius / Profile with freely selectable radius

* Bei Typ L ist der Radius R frei wählbar. Bitte bei der Bestellung den Radius angeben.

* With type L the radius R is freely selectable. Please specify the radius when ordering.

d1 g5	a +0,02 ≥ ≤	b +0,02 ≥ ≤	d2 max.	c max.	l1 +0,3	l3
13	1,5 - 5,0	1,2 - 5,0	6	5,0	32	4
16	3,2 - 7,0	2,0 - 7,0	8	7,0	32	5
20	4,0 - 11,0	2,4 - 11,0	12	11,0	32	5
25	8,0 - 15,0	4,0 - 15,0	16	15,0	32	6
32	11,0 - 19,0	4,8 - 19,0	20	19,0	32	6
38	16,5 - 26,0	6,4 - 26,0	27	26,0	32	8

SE 390

Schwere Ausführung

Mat.: 1.7131, gegläht
Härte: 56 ±2 HRC

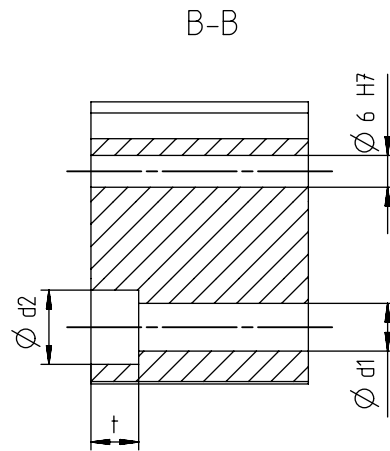
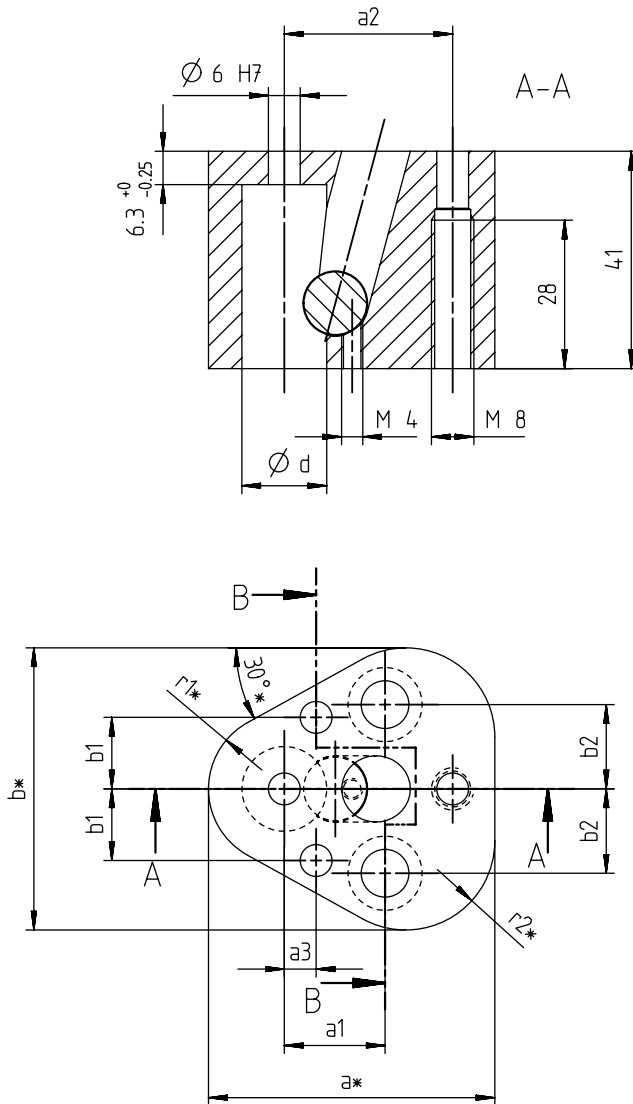
Lieferumfang:
Zylinderkopfschrauben, Zylinderstifte
und Gewindestift

Heavy duty

Mat.: 1.7131, annealed
Hardness: 56 ±2 HRC

Included:
Socket head cap screws, dowel pins
and headless screw

SE 390 / 13



d H6	a*	b*	a3 ±0,01	a1 ±0,13	a2 ±0,01	r1*	r2*	b1 ±0,01	b2 ±0,13	d1	d2	t	Kugel-Ø Ball-Ø	Schraube Screw
10	44,5	43,7	7,5	19,0	26,93	9,5	12,0	9,0	11,1	9,0	15	9	10	M8
13	50,8	50,0	6,5	19,0	29,97	12,7	15,2	12,0	14,3	9,0	15	9	12	M8
16	54,0	53,2	6,0	19,0	31,75	14,3	16,8	13,5	15,9	9,0	15	9	12	M8
20	60,3	59,5	5,0	19,0	33,53	17,5	20,0	16,5	17,5	11,0	18	11	12	M10
25	69,9	69,1	7,0	23,8	40,64	22,2	24,7	22,0	19,8	13,5	20	13	12	M12
32	69,9	69,1	7,0	23,8	40,64	22,2	24,7	22,0	19,8	13,5	20	13	12	M12
40	77,4	76,6	10,0	27,0	43,99	26,0	28,5	26,0	24,0	13,5	20	13	12	M12

* Konturen können variieren. Größtmaße sind in der Tabelle angegeben.

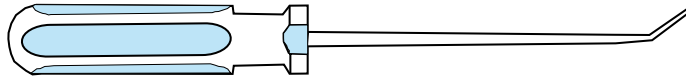
* Contours may vary. Maximum dimensions are given in the table.

SE 360

abgewinkelte Ausführung

angular

 SE 360

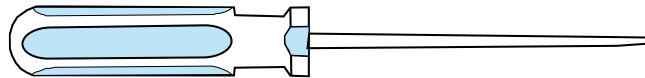


SE 361

gerade Ausführung

straight

 SE 361

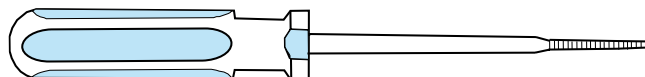


SE 362

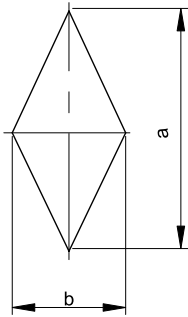
Gewindeausführung

threaded

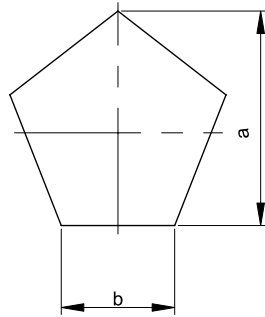
 SE 362



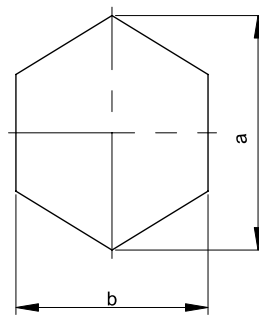
SP1



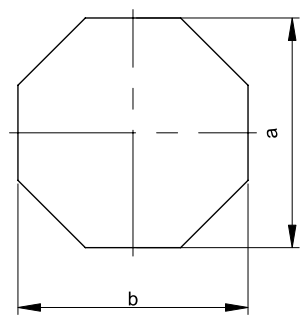
SP2



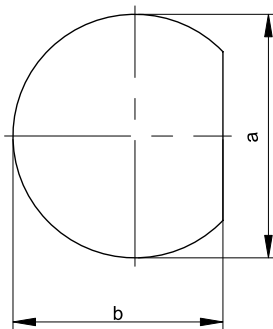
SP3



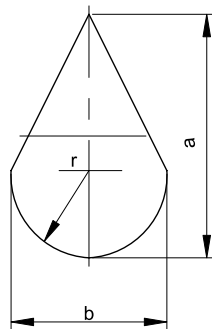
SP4



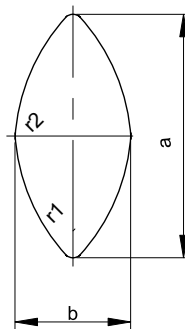
SP5



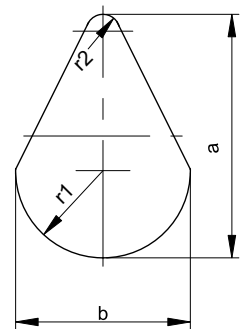
SP6



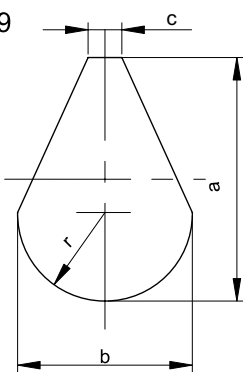
SP7



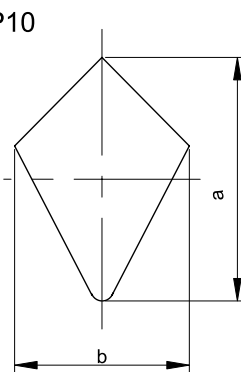
SP8



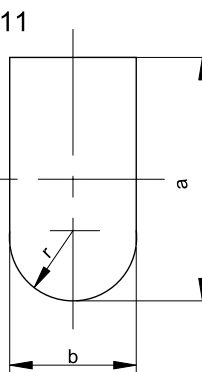
SP9



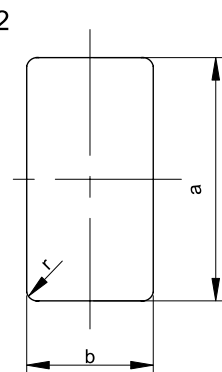
SP10



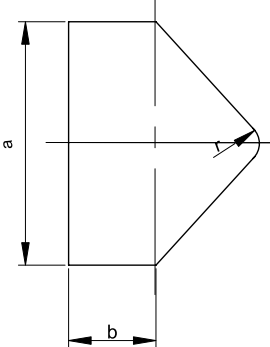
SP11



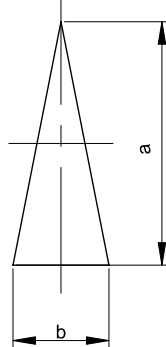
SP12



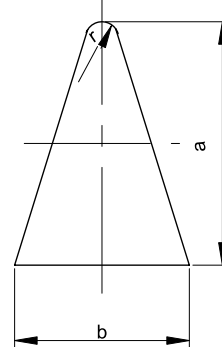
SP13



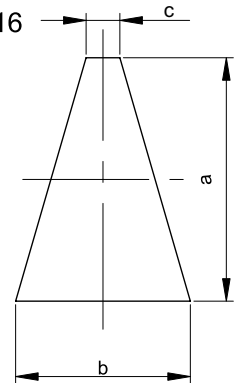
SP14



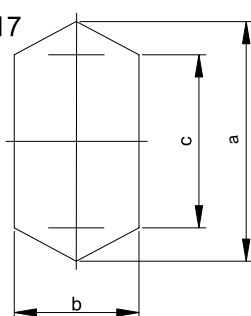
SP15



SP16



SP17

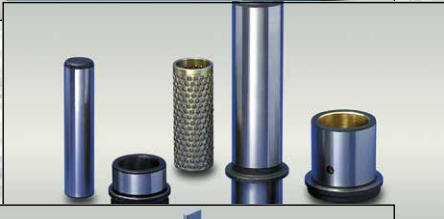


[lieferprogramm] [productrange]



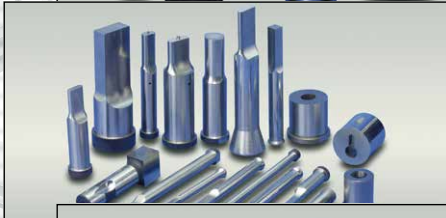
[säulengestelle]
in Standard- und Sonder-
Abmessungen ab 125 x 125 mm
bis 3.000 x 6.000 mm

[diesets]
in standard and custom sizes
between 125 x 125 mm up to
3.000 x 6.000 mm



[führungssysteme]
in den verschiedensten
Ausführungen

[guidingsystems]
available in various designs



[schneidelemente]
mit unterschiedlichsten
Schneidgeometrien

[cuttingelements]
with countless cutting-tip
geometries



[technischeHilfsmittel]
umfangreiche Auswahl von
Schrauben bis zu kleinen
Schiebern

[generaldiecomponents]
huge selection ranging from
screws to small cam units



[federelemente]
umfassendes Programm an ISO-,
Elastomer- und ähnlichen Federn

[springs]
extensive program of ISO-,
elastomer- and similar springs



[nitrocy]Gasdruckfedern]
umfangreiches Programm für
unterschiedliche Anwendungen

[nitrocy]GasSprings]
large program for all commonly
used applications



[hysonStickstoffSysteme]
große Auswahl aus dem Programm
eines der Weltmarktführer

[hysonNitrogenSystems]
huge program from one of the
world market leaders

Märkische Stanz-Partner Normalien GmbH

Jüngerstrasse 17 • D-58515 Lüdenscheid

Tel.: +49 (0) 23 51 / 6 61 07-0 • Fax: +49 (0) 23 51 / 6 61 07-77

e-mail: mail@maerkische-stanz-partner.de • www.maerkische-stanz-partner.de

Es gelten unsere allgemeinen Verkaufs- und Lieferbedingungen, die wir Ihnen auf Nachfrage gerne zusenden.

Our general terms and conditions, which we gladly provide / send on your request, apply at all times.